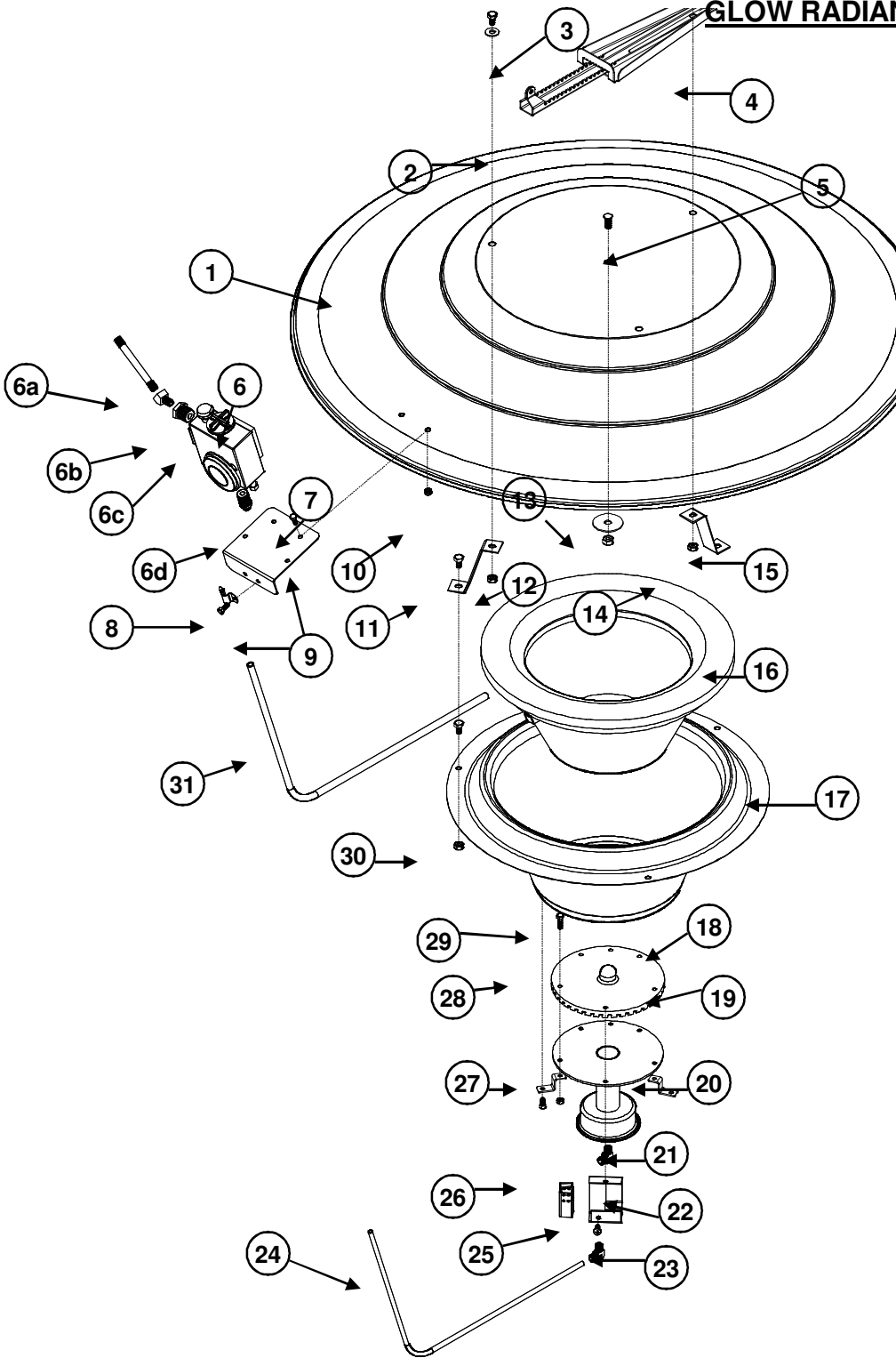




Glow Radiant Gas Brooder Packing List

Phone: 1-800-99VALCO (1-800-998-2526) or 1-419-678-8731

RS, RZ AND SIT CONTROLLERS
GLOW RADIANT BROODER





Glow Radiant Gas Brooder Packing List

Phone: 1-800-99VALCO (1-800-998-2526) or 1-419-678-8731

**RS 110-S, RS 7000 ELC ZONE, S.I.T. SNAP
CONTROLLER GLOW RADIANT PARTS LIST**

DWG. NUMBER	DESCRIPTION	PART NUMBER
1	3' GALVANIZED CANOPY	470001
	3' ALUMINUM CANOPY	470116
2	HANGER BRACKET	470017
3	1/4-20 X 1/2" HEX BOLT (3)	010615
	1/4" FLAT WASHER (2)	010424
4	HANGER BASE	470516
5	5/16 X 3/4" THREADED STUD	012780
6	ROBERTSHAW 110-S CONTROLLER	470016
	S.I.T. SNAP ACTION CONTROLLER	470185
	ROBERTSHAW 7000-ELC ZONE CONTROLLER	470043
6a	1/8 NPT X 3-1/2" GALVANIZED NIPPLE	470067
6b	1/8" X 45 DEGREE ELBOW	470068
6c	1/8" X 1/2" GALV BUSHING - (RS 110-S ONLY)	470057
	1/8" X 3/8" GALV. BUSHING - (OTHER CONTROLLERS)	470196
6d	3/8" X 3/8" PIPE ADAPTER	470539
7	CONTROLLER BASE	470669
8	3/8" TUBE RETAINER	470670
9	10-24 X 1/2" HEXBOLT (4)	012795
10	10-24 KEP NUT (4)	012408
11	1/4-20 X 1/2" HEX BOLT (3)	010615
12	1/4-20 HEX NUT (2)	010602
13	5/16-18 HEX NUT	010603
	3/8" X 1-5/8" FLAT WASHER	410844
14	1/4-20 CENTERLOCK NUT	470125
15	REFLECTOR PAN BRACKET (3)	470038
16	VACUUM FORMED RADIANT	470019
17	SS GLOW RADIANT ASSEMBLY	470111
18	GLOW ASSEMBLY BRACKET (3)	470115
19	BURNER PLATE CASTING	470021
20	RADIANT VENTURI ASSEMBLY	470680
21	BURNER ORIFICE	470673
22	PILOT HOUSING	470668
23	PILOT ORIFICE	470180
24	1/4" PILOT TUBE	470687
25	1/4-20 TAPTITE SCREW	012585
26	PILOT SHIELD	470131
27	10-24 KEP NUT (6)	012408
28	#12 X 1/2" SHEET METAL SCREW (3)	012725
29	10-24 X 3/4" HEXBOLT (4)	730619
	10-24 X 1/2" HEXBOLT (2)	012795
30	1/4-20 HEX NUT (3)	010602
31	3/8" BURNER TUBE	470127